

## sdVMwareESXi Quick Guide

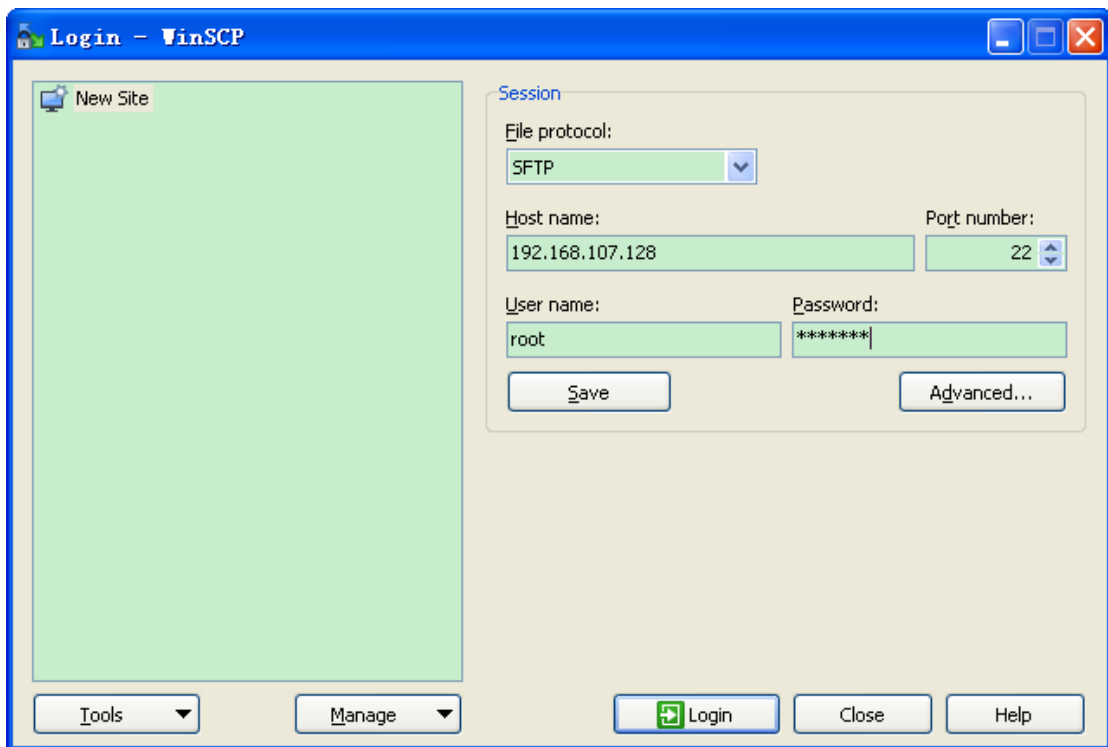
sdVMwareESXi is a shutdown wizard to shut down VMware ESXi. Before shutting down VMware ESXi with sdVMwareESXi, you have to upload sdVMwareESXi.tar to VMware ESXi and extract it. Please be sure to install this program first before operating it.

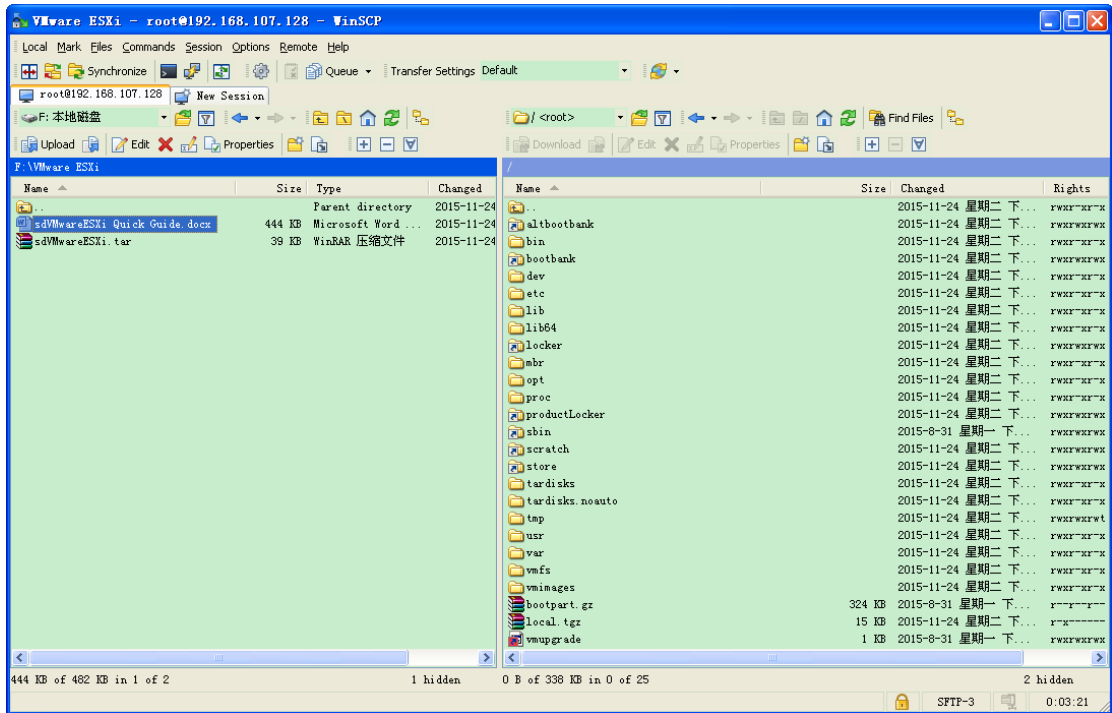
### NOTICE:

- sdVMwareESXi will only shut down VMware ESXi, not shut down other operation systems installed in VMware ESXi.
- sdVMwareESXi is passed all tests in VMware ESXi 5.1 or higher version.

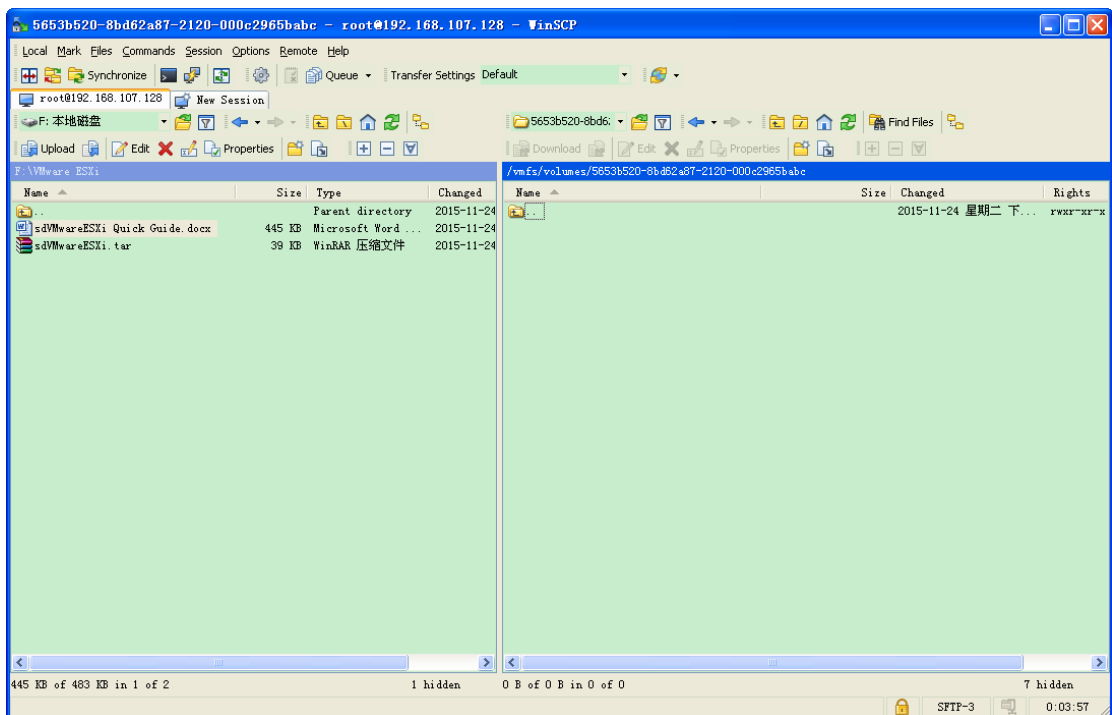
## How to upload sdVMwareESXi.tar to VMware ESXi?

Step 1. Connect to the VMware ESXi with WinSCP.

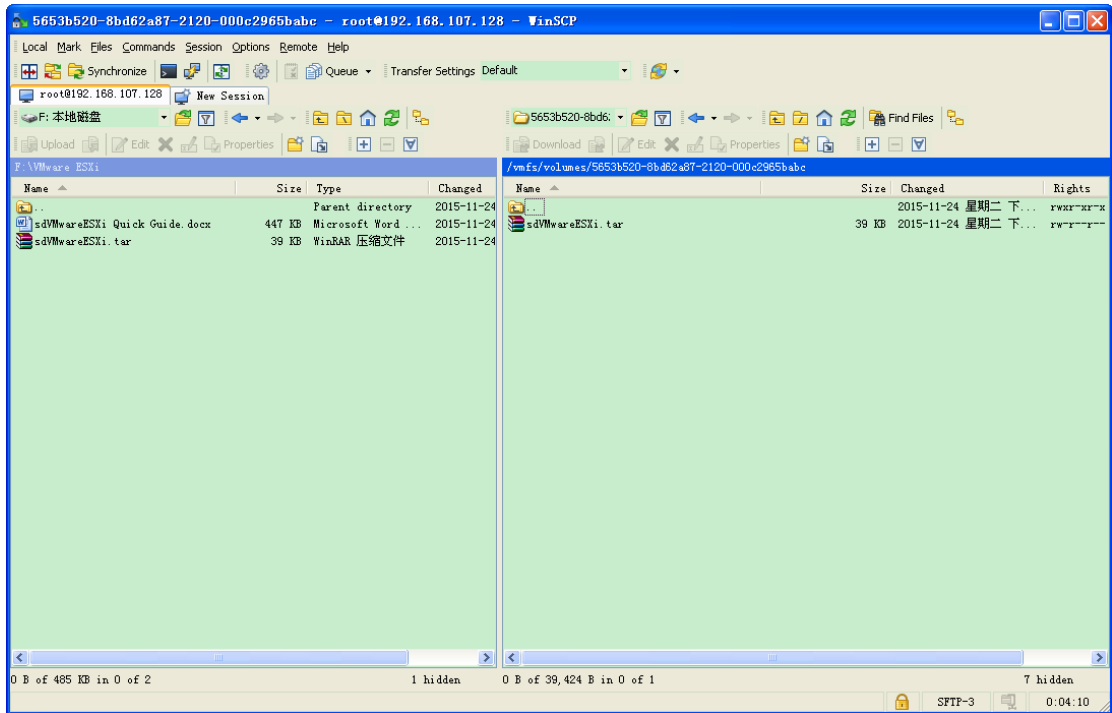




**Step 2. Open the folder “/vmfs/volumes/datastore1” on the right window as below:**

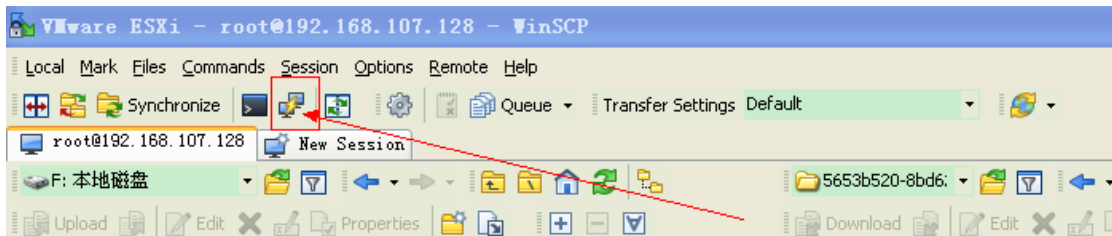


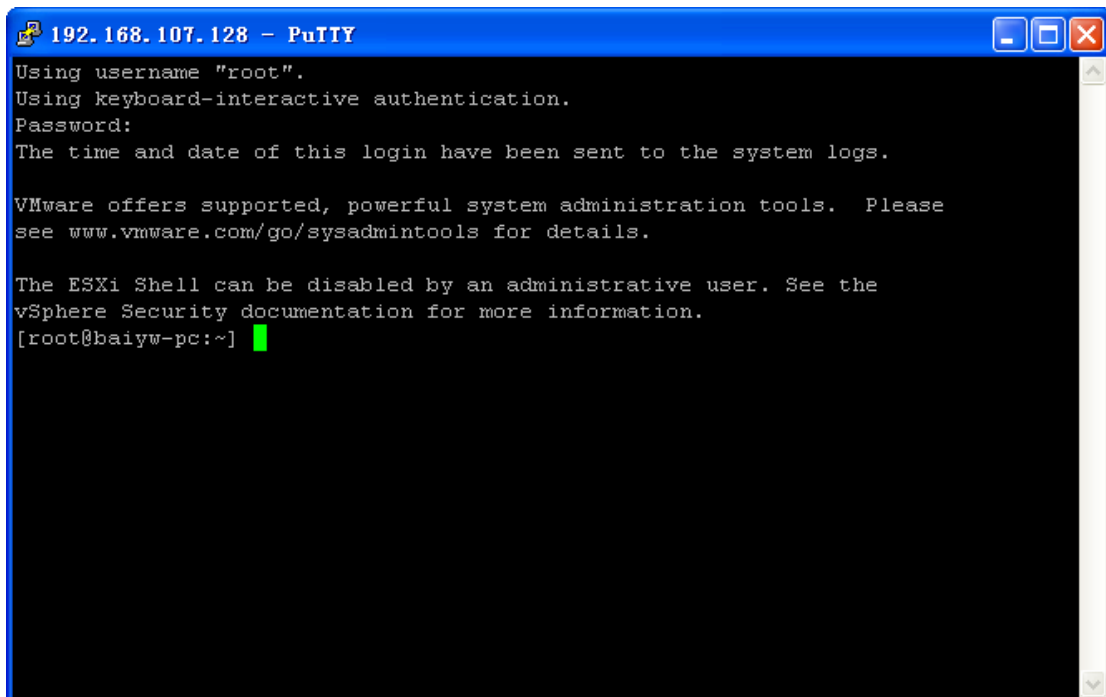
**Step 3. Drag the sdVmwareESXi.tar from the left window to the right window and the upload is complete.**



## How to extract sdVMwareESXi.tar?

### Step 1. Open PuTTY on WinSCP.



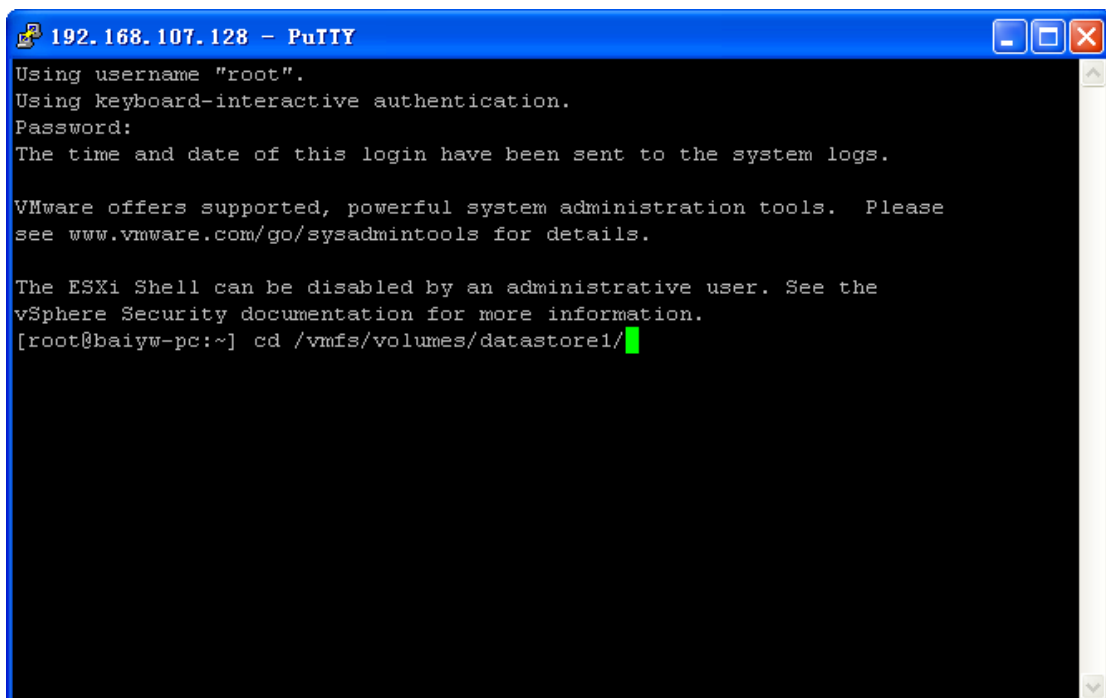


```
192.168.107.128 - PuTTY
Using username "root".
Using keyboard-interactive authentication.
Password:
The time and date of this login have been sent to the system logs.

VMware offers supported, powerful system administration tools. Please
see www.vmware.com/go/sysadmintools for details.

The ESXi Shell can be disabled by an administrative user. See the
vSphere Security documentation for more information.
[root@baiyw-pc:~] █
```

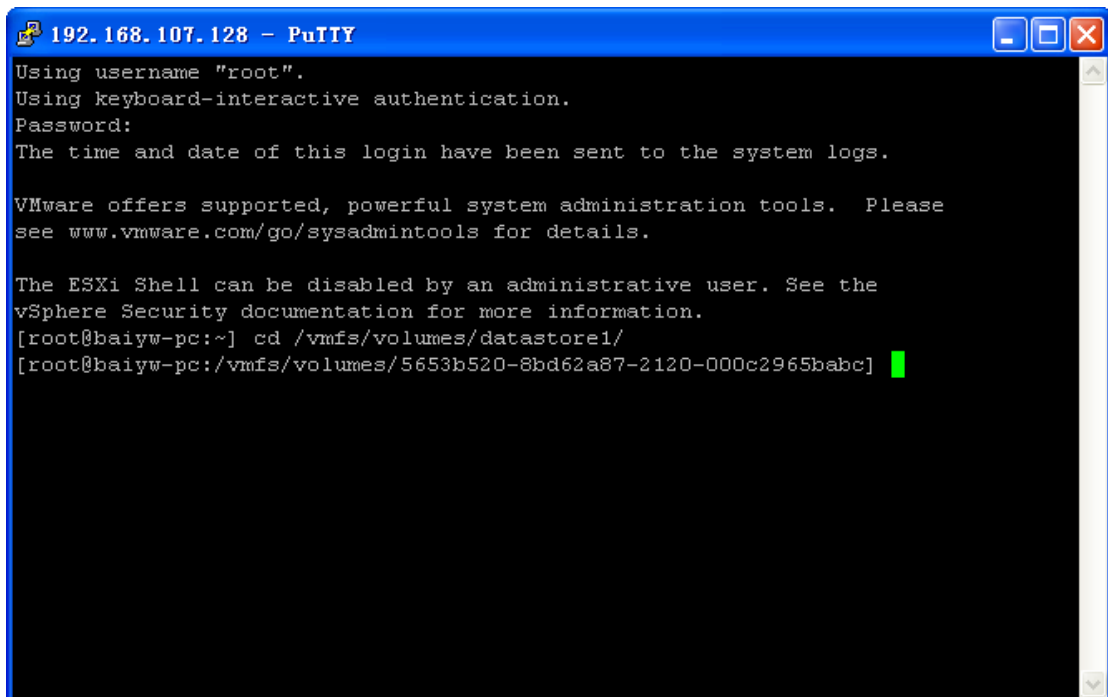
**Step 2. Type “cd /vmfs/volumes/datastore1/” to enter into datastore1 folder.**



```
192.168.107.128 - PuTTY
Using username "root".
Using keyboard-interactive authentication.
Password:
The time and date of this login have been sent to the system logs.

VMware offers supported, powerful system administration tools. Please
see www.vmware.com/go/sysadmintools for details.

The ESXi Shell can be disabled by an administrative user. See the
vSphere Security documentation for more information.
[root@baiyw-pc:~] cd /vmfs/volumes/datastore1/█
```

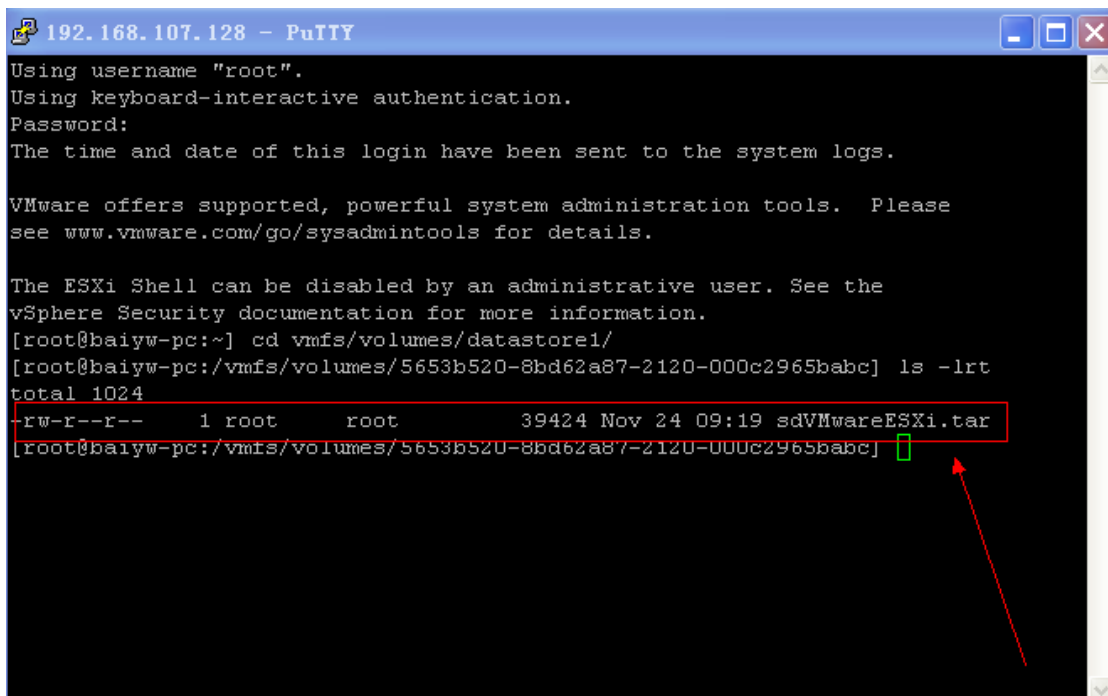


```
192.168.107.128 - PuTTY
Using username "root".
Using keyboard-interactive authentication.
Password:
The time and date of this login have been sent to the system logs.

VMware offers supported, powerful system administration tools. Please
see www.vmware.com/go/sysadmintools for details.

The ESXi Shell can be disabled by an administrative user. See the
vSphere Security documentation for more information.
[root@baiyw-pc:~] cd /vmfs/volumes/datastore1/
[root@baiyw-pc:/vmfs/volumes/5653b520-8bd62a87-2120-000c2965babc] █
```

Step 3. Type "ls -lrt" and you will see the sdVMwareESXi.tar file name that you just uploaded.



```
192.168.107.128 - PuTTY
Using username "root".
Using keyboard-interactive authentication.
Password:
The time and date of this login have been sent to the system logs.

VMware offers supported, powerful system administration tools. Please
see www.vmware.com/go/sysadmintools for details.

The ESXi Shell can be disabled by an administrative user. See the
vSphere Security documentation for more information.
[root@baiyw-pc:~] cd vmfs/volumes/datastore1/
[root@baiyw-pc:/vmfs/volumes/5653b520-8bd62a87-2120-000c2965babc] ls -lrt
total 1024
-rw-r--r--  1 root    root      39424 Nov 24 09:19 sdVMwareESXi.tar
[root@baiyw-pc:/vmfs/volumes/5653b520-8bd62a87-2120-000c2965babc] █
```

Step 4. Type "chmod 777 sdVMwareESXi.tar" to change the permissions of sdVMwareESXi.tar.

```
192.168.107.128 - PuTTY
Using username "root".
Using keyboard-interactive authentication.
Password:
The time and date of this login have been sent to the system logs.

VMware offers supported, powerful system administration tools. Please
see www.vmware.com/go/sysadmintools for details.

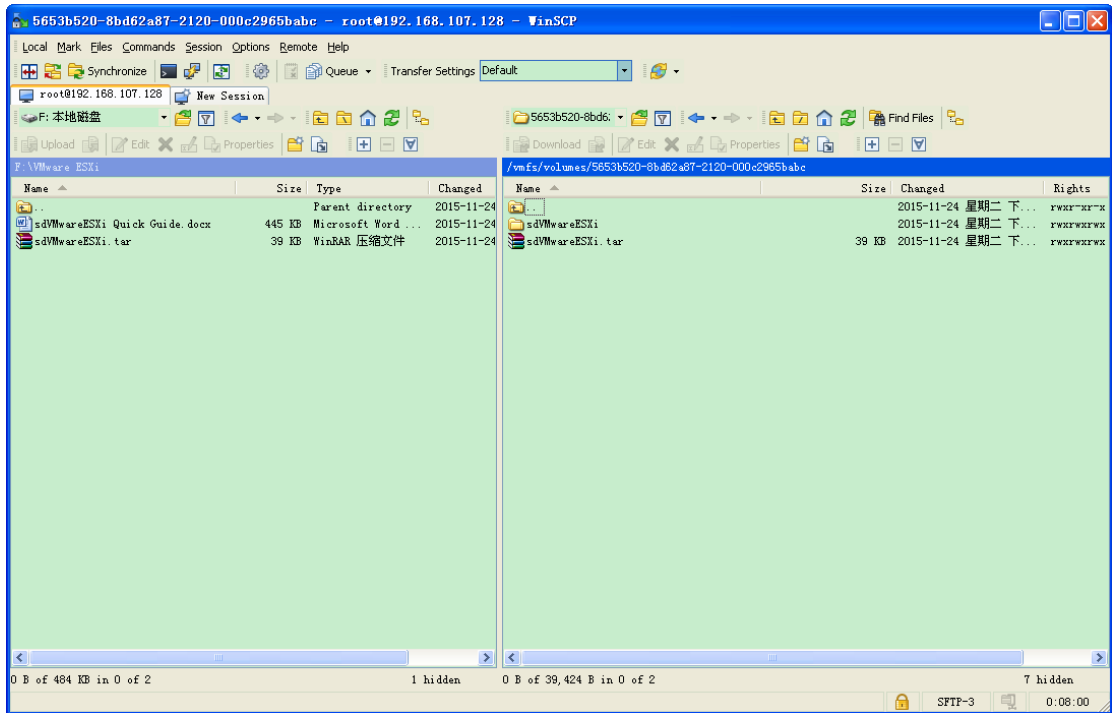
The ESXi Shell can be disabled by an administrative user. See the
vSphere Security documentation for more information.
[root@baiyw-pc:~] cd vmfs/volumes/datastore1/
[root@baiyw-pc:/vmfs/volumes/5653b520-8bd62a87-2120-000c2965babc] ls -lrt
total 1024
-rw-r--r-- 1 root root 39424 Nov 24 09:19 sdVMwareESXi.tar
[root@baiyw-pc:/vmfs/volumes/5653b520-8bd62a87-2120-000c2965babc]
[root@baiyw-pc:/vmfs/volumes/5653b520-8bd62a87-2120-000c2965babc]
[root@baiyw-pc:/vmfs/volumes/5653b520-8bd62a87-2120-000c2965babc] chmod 777 sdVMwareESXi.tar
```

Step 5. Type “tar -xvf sdVMwareESXi.tar” to extract it.

```
192.168.107.128 - PuTTY
The ESXi Shell can be disabled by an administrative user. See the
vSphere Security documentation for more information.
[root@baiyw-pc:~] cd vmfs/volumes/datastore1/
[root@baiyw-pc:/vmfs/volumes/5653b520-8bd62a87-2120-000c2965babc] ls -lrt
total 1024
-rw-r--r-- 1 root root 39424 Nov 24 09:19 sdVMwareESXi.tar
[root@baiyw-pc:/vmfs/volumes/5653b520-8bd62a87-2120-000c2965babc]
[root@baiyw-pc:/vmfs/volumes/5653b520-8bd62a87-2120-000c2965babc]
[root@baiyw-pc:/vmfs/volumes/5653b520-8bd62a87-2120-000c2965babc] chmod 777 sdVMwareESXi.tar
[root@baiyw-pc:/vmfs/volumes/5653b520-8bd62a87-2120-000c2965babc]
[root@baiyw-pc:/vmfs/volumes/5653b520-8bd62a87-2120-000c2965babc] tar -xvf sdVMwareESXi.tar
sdVMwareESXi/
sdVMwareESXi/README.txt
sdVMwareESXi/install
sdVMwareESXi/sdVMwareESXi
sdVMwareESXi/sdVMwareESXi.xml
sdVMwareESXi/sdscript
sdVMwareESXi/shutdown
sdVMwareESXi/startup
sdVMwareESXi/test
sdVMwareESXi/uninstall
[root@baiyw-pc:/vmfs/volumes/5653b520-8bd62a87-2120-000c2965babc]
```

Step 6. Type “ls -lrt” to ensure you have extracted “tar -xvf sdVMwareESXi.tar”. Then, you should see a folder named “sdVMwareESXi”.

```
[root@baiyw-pc:/vmfs/volumes/5653b520-8bd62a87-2120-000c2965babc]
[root@baiyw-pc:/vmfs/volumes/5653b520-8bd62a87-2120-000c2965babc]
[root@baiyw-pc:/vmfs/volumes/5653b520-8bd62a87-2120-000c2965babc] ls -lrt
total 1032
-rwxrwxrwx 1 root root 39424 Nov 24 09:19 sdVMwareESXi.tar
drwxrwxrwx 1 root root 1540 Nov 24 09:28 sdVMwareESXi
[root@baiyw-pc:/vmfs/volumes/5653b520-8bd62a87-2120-000c2965babc]
```



## How to install sdVMwareESXi?

Step 1. Type “cd sdVMwareESXi” to enter into “sdVMwareESXi” folder.

Step 2. Type “ls -lrt” and it will list all current files under “sdVMwareESXi” folder. Now, it should show “install” file.

```
[root@baiyw-pc:/vmfs/volumes/5653b520-8bd62a87-2120-000c2965babc] cd sdVMwareESXi/
[root@baiyw-pc:/vmfs/volumes/5653b520-8bd62a87-2120-000c2965babc/sdVMwareESXi] ls -lrt
total 3072
-rwxrwxrwx 1 root root 555 Nov 24 08:02 sdVMwareESXi.xml
-rwxrwxrwx 1 root root 11030 Nov 24 08:02 sdVMwareESXi
-rwxrwxrwx 1 root root 547 Nov 24 08:02 install
-rwxrwxrwx 1 root root 1024 Nov 24 08:02 README.txt
-rwxrwxrwx 1 root root 462 Nov 24 08:02 uninstall
-rwxrwxrwx 1 root root 8395 Nov 24 08:02 test
-rwxrwxrwx 1 root root 270 Nov 24 08:02 startup
-rwxrwxrwx 1 root root 8415 Nov 24 08:02 shutdown
-rwxrwxrwx 1 root root 27 Nov 24 08:02 sdscript
[root@baiyw-pc:/vmfs/volumes/5653b520-8bd62a87-2120-000c2965babc/sdVMwareESXi] █
```

Step 3. Type “./install” to install sdVMwareESXi. At this time, sdVMwareESXi is set to automatically launch when VVware ESXi is launched.

```
[root@baiyw-pc:/vmfs/volumes/5653b520-8bd62a87-2120-000c2965babc/sdVMwareESXi]
[root@baiyw-pc:/vmfs/volumes/5653b520-8bd62a87-2120-000c2965babc/sdVMwareESXi] ./install
*****
***** Install completely *****
*****
[root@baiyw-pc:/vmfs/volumes/5653b520-8bd62a87-2120-000c2965babc/sdVMwareESXi] █
```

## How to uninstall?

Type `./uninstall` to uninstall the software. Uninstallation will remove all the files of sdVMwareESXi.

## How to startup?

Type `./startup` to launch it.

```
[root@baiyw-pc:/vmfs/volumes/5653b520-8bd62a87-2120-000c2965babc/sdVMwareESXi]
[root@baiyw-pc:/vmfs/volumes/5653b520-8bd62a87-2120-000c2965babc/sdVMwareESXi] ./startup
[root@baiyw-pc:/vmfs/volumes/5653b520-8bd62a87-2120-000c2965babc/sdVMwareESXi]
*****
*** sdVMwareESXi runs successfully! ***
*****

[root@baiyw-pc:/vmfs/volumes/5653b520-8bd62a87-2120-000c2965babc/sdVMwareESXi]
[root@baiyw-pc:/vmfs/volumes/5653b520-8bd62a87-2120-000c2965babc/sdVMwareESXi] █
```

## How to shut down?

Type `./shutdown` to shut down it.

```
[root@baiyw-pc:/vmfs/volumes/5653b520-8bd62a87-2120-000c2965babc/sdVMwareESXi]
[root@baiyw-pc:/vmfs/volumes/5653b520-8bd62a87-2120-000c2965babc/sdVMwareESXi] ./shutdown
*****
*** sdVMwareESXi has been shut down! ***
*****

[root@baiyw-pc:/vmfs/volumes/5653b520-8bd62a87-2120-000c2965babc/sdVMwareESXi] █
```