

PowerWalker VFI 2000RM LCD

Online UPS

2000VA Online UPS

2-in-1 Rack/Tower Design with LCD display

7 IEC Outlets, RJ11/RJ45 Surge Protection, EPO function

Hot-swappable battery design

USB & RS-232 Connection for monitoring

Optional: SNMP module, Dry-contact AS/400 card, MBS RBS, ATS, Rack installation kit, Battery Pack



Item-No. 10120146



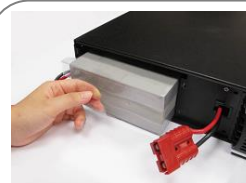
Product Features

With true double-conversion online UPS design, PowerWalker VFI 2000RM LCD provides powerful and overall protection to your sensitive devices. It can accept wide input voltage for harsh environment. It offers full protection for critical devices such as sensitive servers, network/telephone communication systems as well as for industrial applications.

With its slim design it only requires 2U valuable space of your rack system. The UPS can be installed in 19" rack systems or used as tower.

- True double-conversion
- Pure sine wave output
- Hot-swappable battery design
- Monitoring software included
- Output power factor 0.8
- Wide input voltage range (110-300 VAC)
- Input power factor correction 0.99
- 50/60 Hz frequency converter mode
- ECO mode operation for energy saving
- Programmable power management outlet
- Emergency power off (EPO) function
- Intelligent fan control for reduced noise level
- Smart battery charger to extend battery life
- Optional: SNMP module, dry contact AS/400 card, MBS, ATS, Battery Pack

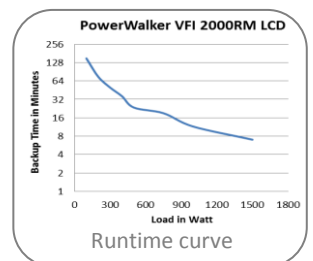
Rack installation kit, RBS



Hot-swappable battery design



Backside view



Technical Details

Product Features

Capacity	2000VA / 1600W
----------	----------------

Input

Voltage Range Low Line Transfer	160/140/120/110VAC \pm 5%
------------------------------------	-----------------------------

Voltage Range Low Line Comeback	170/150/130/120VAC \pm 5%
------------------------------------	-----------------------------

Voltage Range High Line Transfer	300VAC \pm 5%
-------------------------------------	-----------------

Voltage Range High Line Comeback	290VAC \pm 5VAC
-------------------------------------	-------------------

Frequency Range	45Hz ~ 55Hz or 56Hz ~ 65Hz
-----------------	----------------------------

Phase	Single phase with ground
-------	--------------------------

Power Factor	+/- 1Hz
--------------	---------

Output	208/220/230/240 VAC
--------	---------------------

AC Voltage Regulation (Batt. Mode)	\pm 1 %
---------------------------------------	-----------

Frequency Range (Synchronized Range)	48 ~ 52Hz or 58 ~ 62Hz
---	------------------------

Frequency Range (Batt. Mode)	50Hz \pm 0.2Hz or 60Hz \pm 0.2Hz
---------------------------------	---

Current Crest Ratio	3:1
---------------------	-----

Harmonic Distortion	\leq 2% THD (Linear Load) 8% max. (Batt. Mode before shut down)
---------------------	--

Waveform (Batt. Mode)	Pure Sine Wave
-----------------------	----------------

Transfer Time

AC Mode to Batt. Mode	zero
-----------------------	------

Inverter to Bypass	4ms (Typical)
--------------------	---------------

Efficiency

AC Mode	88 %
---------	------

Battery Mode	85 %
--------------	------

Overload capability

AC Mode	2min @105%-130% 10s @130%-200% 0.25s @>200%
---------	---

Battery Mode	10s @105%-130% 0.25s @>130%
--------------	--------------------------------

Battery

Type	12V / 7Ah
------	-----------

Quantity	6x
----------	----

Recharge Time	4h to 90%
---------------	-----------

LCD Display

LCD Indicators	UPS status, Load level, Battery level, Input/Output voltage, AC mode, battery mode, Bypass mode, fault conditions
----------------	--

Audio Indicators

Battery Mode	Beep every 4sec
--------------	-----------------

Low Battery	Beep every second
-------------	-------------------

Overload	Beep twice every second
----------	-------------------------

Fault	Continuously sounding
-------	-----------------------

Connections

Communication	USB & RS-232 port
---------------	-------------------

Outlets	1x IEC C19, 6x IEC C13 (programmable)
---------	---------------------------------------

Protection Port	RJ11/RJ45 (in/out)
-----------------	--------------------

Intelligent Slot	Yes
------------------	-----

EPO	Yes
-----	-----

Software & System Requirements

Software	ViewPower
----------	-----------

Operating System	For details visit: www.powerwalker.com/viewpower.html
------------------	--

Other	1x USB port or 1x RS-232 port
-------	-------------------------------

Product Details

Dimensions	438 x 600 x 88 mm
------------	-------------------

Colour	Black
--------	-------

Weight	25.7kg
--------	--------

Fan Control	Always on, automatic speed control
-------------	------------------------------------

Noise Level	< 50dB at 1 meter
-------------	-------------------

Model Code	VFI 2000RM LCD
------------	----------------

Environment

Temperature	0°C – 40°C
-------------	------------

Humidity	20 - 90% (non-condensing)
----------	---------------------------

Package Content

Package Content	PowerWalker VFI 2000RM LCD, Input power cord, 2x IEC cable, USB cable, Software CD, manual, Tower holder, Rack ears
-----------------	--

Logistic Data

Giftbox Language	EN
------------------	----

Manual Language	EN/DE/FR/ES/IT/PT/RU
-----------------	----------------------

Dimension/Giftbox	710 x 565 x 264 mm
-------------------	--------------------

Weight/Giftbox	t.b.c.
----------------	--------

Pieces/Carton	1
---------------	---

Pieces/Palette	14
----------------	----

Item Number	10120146
-------------	----------

EAN	4260074975154
-----	---------------

Warranty	24 Months (except battery)
----------	----------------------------

Available accessories



SNMP manager
 Datasheet: [Link](#)
 Item No.: 10120505



EMD for SNMP Manager
 Environmental Monitoring
 Device Monitor Temperature &
 Humidity
 Datasheet: [Link](#)



Modbus Card
 Datasheet: [Link](#)
 Item No.: 10120565



AS/400 Card
 Datasheet: [Link](#)
 Item No.: 10120515



ATS (Automatic Transfer Switch)
 Datasheet: [Link](#)
 Item No.: 10120543



USB cable
 Item Nr.: C20
 Item Nr.: 91010028

RS-232 cable
 Item Nr.: 91010012



19" MBS
 Maintenance Bypass Switch
 Datasheet: [Link](#)
 Item No.: 10120501



Yuasa 12V/7Ah battery
 Datasheet: [Link](#)
 CSB or Panasonic brand can
 also be used



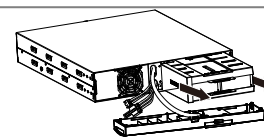
Yuasa 12V/9Ah battery
 Datasheet: [Link](#)
 CSB or Panasonic brand can
 also be used



MBS (Maintenance Bypass Switch)
 Datasheet: [Link](#)
 Item No.: 10120500



19" Rack-Mount-Kit
 Datasheet: [Link](#)
 Item No.: 10120507



Battery Set with 6x 12V/7Ah batteries
 (Plug-and-Play solution incl. case and cabling to
 change internal Set of VFI 2000RM LCD)
 Datasheet: [Link](#)
 Item No.: to be checked



Battery Pack with inside 2x Battery Sets
 (Battery set contain 6x 12V/7Ah batteries)
 Datasheet: [Link](#)
 Item No.: 10120549
 Possible to connect more than 1 Battery Pack



Battery Pack with inside 2x Battery Sets
 (Battery set contain 6x 12V/9Ah batteries)
 Datasheet: [Link](#)
 Item No.: 10120550
 Possible to connect more than 1 Battery Pack

Use UPS configurator on www.powerwalker.com for
 detailed backup time information.

Version: EN 26/08/2014
 We reserve the right for technical changes and mistakes



Schuko Input -> IEC C13
Item Nr.: 91010017



UK Input -> IEC C13
Item Nr.: 91010029

Swiss Input -> IEC C13



IEC C13 -> IEC C14
Item Nr.: 91010013



Schuko Input -> IEC C19
Item Nr.: 91010018

UK Input -> IEC C19
Item Nr.: 91010030

Swiss Input -> IEC C19



IEC C19 -> IEC C20
Item Nr.: 91010028



IEC C13 -> IEC C20
Item Nr.: 91010041



IEC C14 -> IEC C19
Item Nr.: 91010040



IEC C14 -> Schuko
Converter
Item Nr.: 91015003



Schuko -> UK adaptor
Item Nr.: 91010031